

SAVING SPACE IS JUST THE BEGINNING

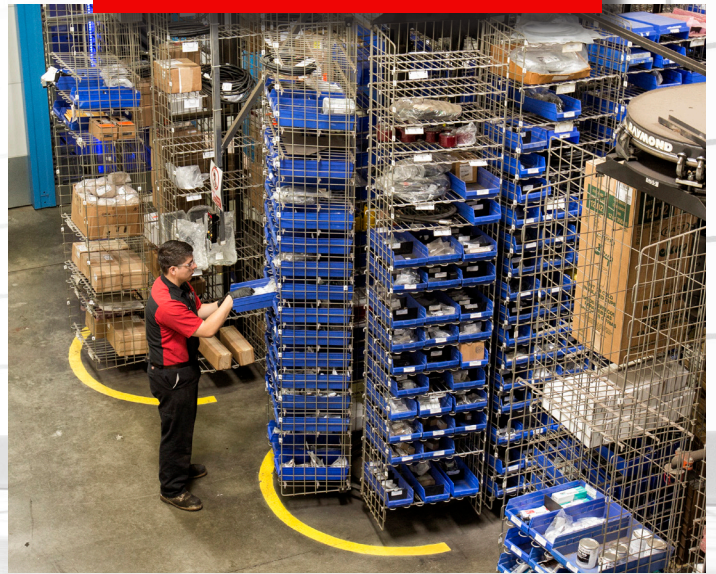
Maximizing the efficiency and productivity of a facility is no simple task. With so many variables constantly changing, getting the most out of your business space is critical for your individualized success. Streamlining operations from the ground up can drastically increase bottom line profits. Contact our consultants to learn more about how we can help your business save space and maximize profitability.

VERTICAL LIFT MODULE (VLM'S)



VLM's are perfect for variable or changing part sizes. They can save up to 85% of floor space by utilizing full ceiling height, the dynamic shelving maximizes storage density and improves ergonomics with goods-to-person delivery.

HORIZONTAL CAROUSELS



Horizontal carousels offer affordable, reliable storage plus high-speed picking performance. They have fast access times for increased productivity and save up to 60% of floor space by eliminating wasted aisle space.

VERTICAL BUFFER MODULE



The LR35 vertical buffer module has been designed to meet a broad range of storage and retrieval applications including buffering, kitting, and order picking.

VERTICAL CAROUSELS



Vertical Carousels have faster access times for increased productivity, are perfect for managing like-sized parts and save up to 75% of floor space by utilizing full ceiling height.

85%

Recovered Floor Space

67%

Increased Product Delivery

100%

Ergonomic Delivery

99.9%

Pick Accuracy

NARROW AISLE SOLUTIONS



Grow vertically without expanding horizontally, Raymond's narrow aisle trucks can operate in aisles that are less than half the width required by conventional forklifts, with a greater stack height capability.

MODULAR OFFICES



Add additional office space without a high-cost renovation. Modular offices not only save space, but can save costs by only heating and air conditioning that portion of the warehouse.

RADIO SHUTTLE



This semi-automated high density storage system allows for a maximum use of warehouse space. Store more pallets deep since channels can stand more than 131 ft high.

MEZZANINES



Rather than move to a new facility, mezzanines allow you to easily add on a surprising amount of extra usable floor space for storage, work room, or for whatever other needs you may have.

If you are looking for a partner to set up a warehouse with the most productive, effective solutions the industry provides - call for a free consultation. We have knowledge and experience in all warehouse solutions.

sales@raymondwest.com | 800.669.5438 | raymondwest.com

RAYMOND | **WEST**
INTRALOGISTICS SOLUTIONS