

Sometimes Walls Really Can Build Themselves.

Let inVia Picker robots bring every day's ordered goods to your people.

Our inVia Picker Wall is a dynamic wall that inVia Picker robots rebuild every day with each new day's set of ordered goods. When your people start their shift, they simply pull the ordered quantity of each SKU from inVia Picker Wall and sort them into orders to be packed and shipped out to your customers.

This allows for maximum efficiency in your warehouse picking operation, as well as in your inventory replenishment. Time-consuming dependencies between people and robots are eliminated, allowing robots to work non-stop across every shift to move ordered goods to the front of the warehouse.

### inVia's Turnkey Automation Solution



**INVIA LOGIC**  
AI-Driven Software



**INVIA PICKMATE**  
Simple Mobile Tools



**INVIA PICKER**  
Robotic Automation



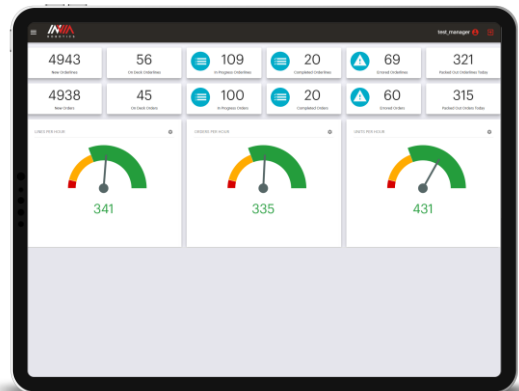
**ROC**  
Remote Operations



Our subscription-based system isn't just hardware, software, or remote oversight. It's all of the above, working together seamlessly to optimize your operations. Nimble robots, powerful AI-driven optimization software, and 24/7 proactive monitoring all dramatically increase productivity.

## inVia Picker Wall features:

- **Uninterrupted workflows** - inVia Picker robots are decoupled from shift work in this workflow and can continue retrieving and storing totes without disruption.
- **Costly warehouse walking eliminated** - Workers remain stationary on the other side of the inVia Picker Wall where all of the day's ordered goods are brought to them for sortation.
- **Increased picking/ sortation rates** - Includes inVia PickMate user tool that incorporates colors to make picking and sorting more intuitive, delivering speeds of up to 300 LPH.
- **Dynamic slotting** - Inventory totes are placed in the optimal position based on real-time order data and prioritization.
- **Full-scale automation across SKUs** - Decoupling of robots from shift work optimizes movement of all goods in a facility, both "short tail" and "long tail".
- **Supports dark warehouses** - inVia Picker robots are equipped with lights and are designed to operate through the night outside of worker shifts.
- **Facilitates rotation of worker assignments** - Time workers spend picking is greatly condensed, allowing them to rotate through other warehouse tasks.
- **Workflows that adapt quickly to operational changes** - Our inVia Picker Wall can be replaced with our standard workflow overnight, to accommodate changes in order patterns and shift schedules.



Business Intelligence

[Request a Demo](#)

[www.inviarobotics.com/request-a-demo](http://www.inviarobotics.com/request-a-demo)

inVia's solutions bring unmatched order, accuracy, and efficiency into your warehouse, translating customer demands into business realities. All of our systems are adaptable and fully scalable, allowing you to automate for today's needs and grow into your needs for tomorrow.

